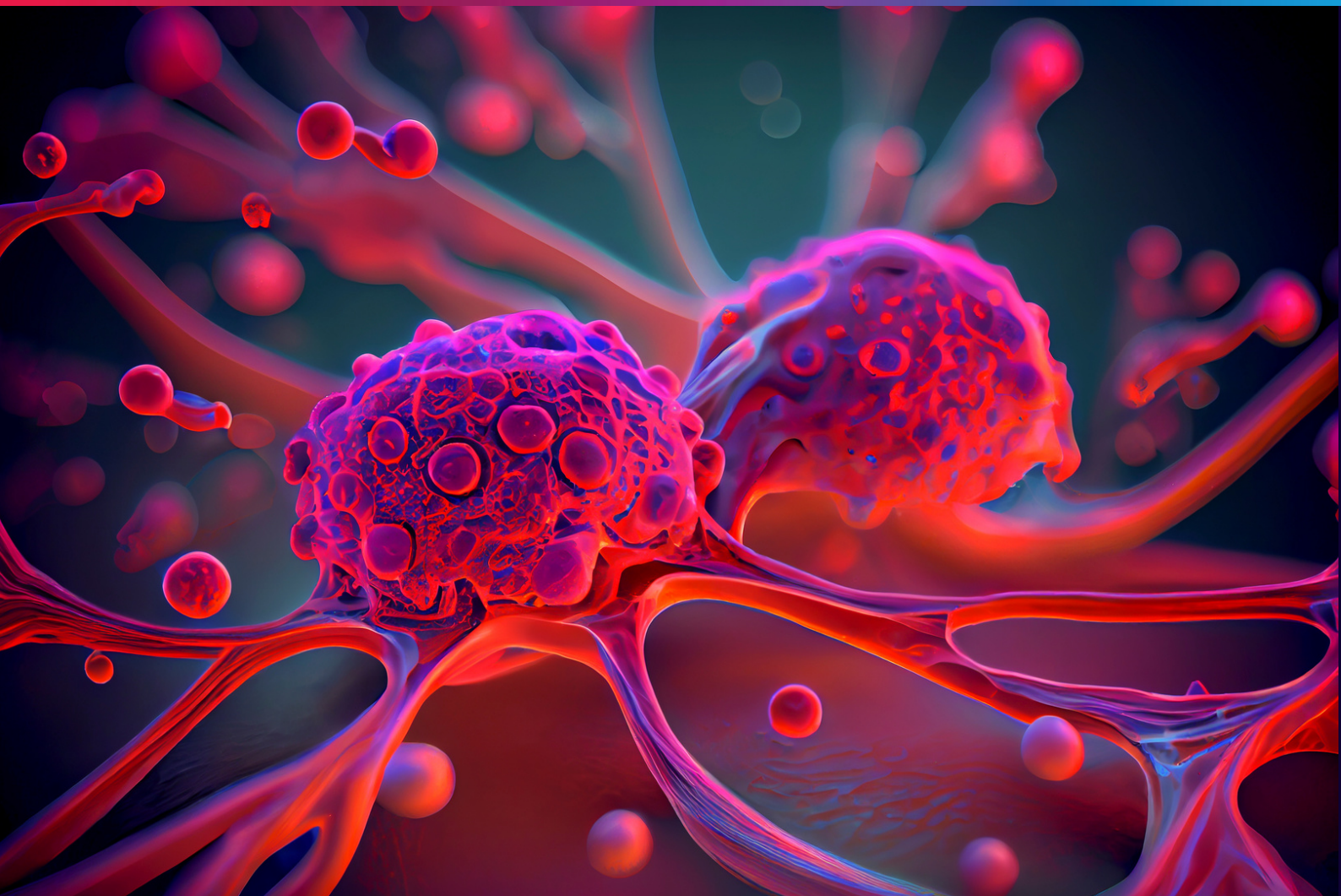


**WARP NINE**


Charging at warp speed to find the cancer treatments of the future!

**Revolutionising Cancer Care for  
Pancreatic, Gastro-intestinal,  
and Rare Cancers:  
Your Support, Their Hope**





# Table of Contents

- 
- 03** About WARPNINE
  - 04** Mission and Vision
  - 05** Understanding gastro-intestinal and rare cancers
  - 06** The Current Situation: A Stark Reality
  - 08** **Priority Needs**
  - 08** i-GOLSTA Clinical Trial
  - 09** i-BOXOFFICE Clinical Trial
  - 10** WARPNINE Fellowship
  - 11** WARPNINE Clinical Trial Coordinator
  - 12** The Opportunity for Transformation
  - 13** **How You Can Help**



# About WARPINE

WARPINE is Western Australia's research into pancreatic, gastro-intestinal, and rare cancers.

Born from the vision of Dr Andrew Dean, a distinguished oncologist in Western Australia, our foundation emerged in May 2021. Driven by the urgent recognition of a growing demand for dedicated research, heightened awareness, and unwavering support for individuals and families grappling with the relentless challenges posed by pancreatic, gastro-intestinal, and rare cancers.

We owe our existence to the incredible generosity of our founding donors. Their remarkable commitment has empowered us to make a real difference. We are on a relentless mission to raise essential funds, paving the way for translational research that swiftly transforms groundbreaking discoveries from laboratory settings into life-changing bedside solutions. Our focus extends to clinical research, fostering immediate, real-world clinical trials that directly impact patient well-being and enhance the lives of those affected.

But we don't stop there. We're committed to projects that not only better the present but also secure a healthier and brighter future for Western Australians and those around the world affected by these insidious diseases. Together, we're fighting to defeat cancer and improve the health and well-being of countless lives.

## WARPINE Board and CEO



**Dr Andrew Dean**  
Chair and Medical Oncologist



**Mr Richard Scragg**  
Director



**Mr Neil Rae**  
Deputy Chair



**Mr Vic Jakovich**  
Director



**Mr Tony Mckenna**  
Treasurer



**Hon. Liza Harvey**  
Director



**Mr Bill James**  
Secretary



**Mrs Meg Croucher**  
CEO

# Mission and Vision

We are a small, dedicated team committed to making a measurable difference in the outcomes and survival rates for pancreatic, gastro-intestinal and rare cancers.



## Mission

We seek to address the inequity in cancer outcomes for what are essentially underfunded and under-researched malignancies, and we are committed to providing real and meaningful benefit to patients while building on Western Australia's best-in-the-world outcomes for these cancers.

## Vision

To pioneer a future where patients receive early access to groundbreaking clinical trials, where leading researchers and specialists are equipped to facilitate the seamless translation of laboratory findings into practical bedside applications, and specialised projects are initiated, directly improving the well-being of patients. Ultimately, we aspire to catalyse a transformation, turning these once-devastating cancers into curable diseases.

# Understanding gastro-intestinal and rare cancers

Despite being primary contributors to cancer-related fatalities, gastro-intestinal and rare cancers remain critically underfunded and undersupported. Their limited visibility is exacerbated by patients' tragically brief life expectancy post-diagnosis.

## Gastro-intestinal

Gastro-intestinal cancer collectively refers to a group of malignancies affecting the digestive system. These cancers impact vital organs such as the esophagus, stomach, liver, gallbladder, biliary tract, pancreas, large and small bowel, rectum, and anus. These organs play pivotal roles in food and fluid digestion, nutrient processing, energy absorption, blood sugar regulation, and waste elimination.

## Rare

Rare cancers encompass over 200 different types, with an incidence rate of less than 6 cases in 100,000 Australians per year. Less common cancers have an incidence rate between 6 and 12 cases per 100,000 Australians annually. Astonishingly, while individual occurrences may seem low, together, rare and less common cancers account for 38% of all cancer deaths in Australia.

\*AIHW Australian Cancer Database 2019 and National Mortality Database

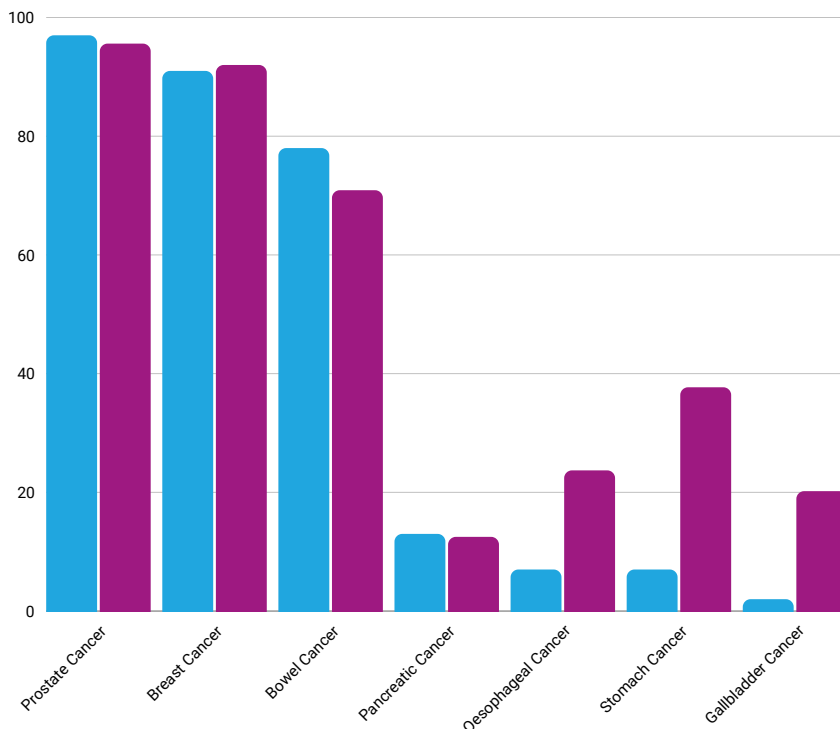
# The Current Situation: A Stark Reality

To cut to the chase, the situation is grim:

Gastro-intestinal and rare cancers collectively rank as the most prevalent cancers in Australia. They are a leading cause of cancer-related deaths, with treatment options and survival rates significantly lagging behind more common cancers due to insufficient funding and awareness.

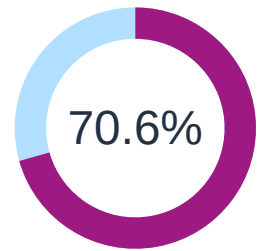
Ideally, the distribution of research funding for different types of cancer should be equitable with respect to the societal burden each type of cancer imposes. However, if we compare the latest figures presented by the Australian Institute of Health and Welfare, it is clear that this is not the case.

■ Comparative Percentage of Government Funding 2019-2020 \$M  
 ■ 5-year Survival Rate From Diagnosis 2015-2019

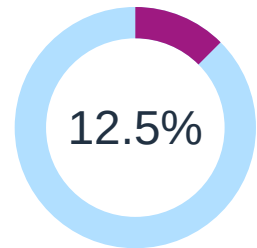


## FIVE-YEAR CANCER SURVIVAL

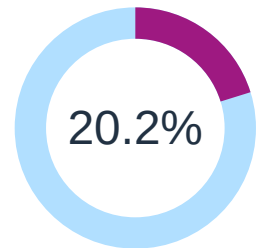
of persons (all ages) from diagnosis in 2015-2019



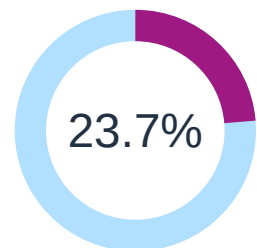
ALL CANCERS COMBINED



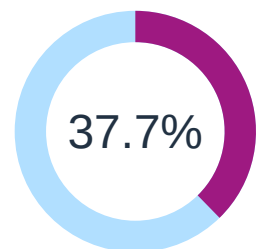
PANCREATIC CANCER



GALLBLADDER & EXTRAHEPATIC BILE DUCT CANCER



OESOPHAGEAL CANCER



STOMACH CANCER



Adding to the challenge, the pursuit of critical funding from the National Health and Medical Research Council (NHMRC), the main statutory authority of the Australian Government responsible for medical research, imposes a stringent requirement—studies must be at least 80% complete to be deemed competitive.

This rigorous standard poses a significant challenge for researchers studying low-survival cancers like pancreatic, rare, and gastro-intestinal malignancies, where preliminary data is often scarcer compared to more common cancers with better outcomes. This glaring inequity starkly hampers the allocation of essential funding to combat these malignancies.

WARPNINE stands as a beacon of hope, dedicated to securing philanthropic funding, driving translational research, pioneering patient-centred initiatives, and expediting clinical trials for immediate patient benefits. Our mission is to rectify disparities in outcomes for those facing challenging cancers.

Gastrointestinal and rare cancer treatment is complex, demanding a multifaceted approach that includes surgery, radiotherapy, and chemotherapy. Clinical trials are at the forefront of progress, meticulously crafting optimal treatments tailored to real individuals.

These trials are not confined to labs; they impact lives, charting a course toward compassionate care. Conducting trials in Australia provides patients access to cutting-edge treatments years ahead of international peers, offering a brighter tomorrow for those with gastrointestinal and rare cancers.

**Our commitment is clear:** we're agile, future-focused, and dedicated to prioritising patient care and outcomes. With the support of generous donors and corporate partners, we aim to reduce cancer outcome disparities, especially in gastro-intestinal and rare cancers, while building upon Western Australia's research successes.

Western Australian researchers have been at the forefront of pioneering cancer treatments. Your support allows us to continue our relentless pursuit of cutting-edge cancer treatments, improving survival rates and patient outcomes for these challenging and often fatal cancers. Dedication, skill, and tenacity are essential to our mission, and we can only achieve our ambitious goals with your backing.

We concentrate our support in three critical areas:

- 1. Clinical Trials:** Accelerating the development of new interventions to benefit patients in Western Australia and beyond.
- 2. Translational Research:** Transforming the future of medicine for pancreatic, gastro-intestinal, and rare cancers through funding new treatments and diagnostics, translating discoveries into better healthcare and outcomes.
- 3. Innovative Projects and New Technologies:** Developing effective treatments for underfunded malignancies and investing in state-of-the-art technologies to enhance patient outcomes.

# Delivering On Our Commitment: With your support

At WARPINE, our unwavering dedication lies in advancing healthcare, ensuring that individuals affected by gastro-intestinal or rare cancers can access the life-changing benefits of cutting-edge technologies and personalised treatments.

## Priority Needs

Healthcare is undergoing an unprecedented transformation, and philanthropy is indispensable in steering this evolution. Now, more than ever, the extraordinary generosity of our supporters empowers us to transform promising research and groundbreaking medical discoveries into the highest potential for a cure, giving hope to countless patients.

## i-GOLSTA

Clinical Trial

### Impact and Aims

The iGOLSTA trial will provide WA patients with access to a new and innovative treatment that could change the landscape of gastro-oesophageal cancer treatment and prognosis. Data from iGOLSTA has the potential to lead to more extensive trials, which may change the current standard of care treatment for these cancers AND increase the potential for immunotherapy in gastro-oesophageal cancer.

### Project Overview

A safety and feasibility study of LSTA-1 in combination with immunotherapy molecules and FOLFIRNOX for first-line treatment of unresectable, locally advanced or metastatic gastro-oesophageal and gastric adenocarcinoma.

# i-BOXOFFICE

## Clinical Trial

### Impact and Aims

Biliary cancer is an aggressive disease with poor survival outcomes as they are often diagnosed late, progress rapidly and have early metastases. The current standard of care treatment for patients with advanced biliary cancer provides only modest benefits.

Through this trial, we aim to improve overall survival, outcomes, and quality of life for patients with biliary cancer.

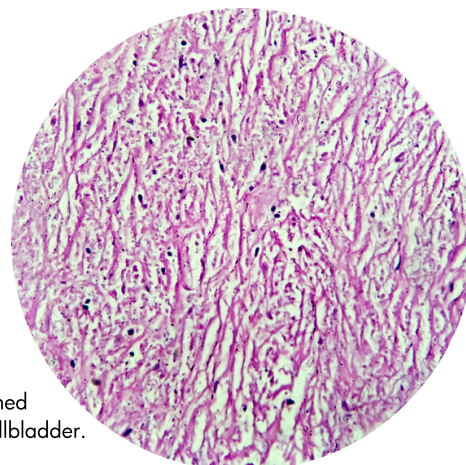
### Project Overview

This is a safety, tolerability and feasibility study of NALIRIFOX (nal-Irinotecan, fluorouracil, folinic acid and oxaliplatin) in combination with durvalumab and LSTA1.

Biliary cancers are rare, with an incidence rate in Australia of 3/100,000. Biliary cancers can be subdivided into cancers of the gallbladder or cancers of the biliary tract, also known as cholangiocarcinoma. Cholangiocarcinoma can be further subdivided into intrahepatic cancers – arising from bile ducts in the liver, or extrahepatic cancers - arising from bile ducts outside the liver.

In patients who are diagnosed with early-stage disease, surgical resection is the curative treatment option. Unfortunately, biliary cancers are often diagnosed late due to their insidious presentation, and surgical resection is often not an option. Until 2010, there was no established standard of chemotherapy for patients with advanced biliary cancer.

Despite the advances in treatment options, survival rates remain poor. We hope to build on the success of earlier trials with the aim of proving the safety of NALIRIFOX with LSTA1 and durvalumab, with the long-term goal of improving survival rates for patients with advanced biliary cancer.



Tissue from the Gallbladder (Laparoscopic cholecystectomy) hematoxylin and eosin stained microscopic show Carcinosarcoma of the gallbladder. Gallbladder cancer.

# WARPNINE Fellowship

Empowering Tomorrow's Healthcare Leaders

## Impact and Aims

1. Attract and retain emerging research leaders poised to shape the future of health and medical innovation.
2. Expedite high-quality research for innovative therapies, enhancing patient care and outcomes.
3. Foster research for underfunded and under-researched malignancies.
4. Strengthen Western Australia's world-leading outcomes for gastro-intestinal and rare cancers, ultimately improving patient survival rates.

Our commitment extends to preserving the groundbreaking efforts led by Western Australian Oncologists, Surgeons, and specialists.

To achieve this, we recognise the importance of nurturing the next generation of leaders and visionaries in the field.

A WARPNINE Fellowship strengthens Western Australia's research and innovation capabilities, offering emerging students exceptional research training and career prospects. These select individuals gain invaluable opportunities to learn from and collaborate with current leaders in gastro-intestinal and rare cancer research and treatment.

With your support, we empower these emerging leaders to cultivate their research skills independently, guided by mentorship. WARPNINE Fellowships also allow recipients to refine their bedside manner, develop crucial leadership experience, and ultimately enhance patient care and outcomes.

### **Expected Benefits of a WARPNINE Fellowship:**

A WARPNINE Fellowship benefits all individuals impacted by gastro-intestinal and rare cancers. It offers unique educational and training opportunities to foster the next generation of translational research physician-scientists in these specialised fields. These Fellowships instil in individuals the confidence, insights, and motivation to expand their work in niche medical areas. This is pivotal in addressing research disparities, advancing treatment options, and ultimately improving outcomes for rare and gastro-intestinal cancers.

# Elevating Our Impact:

The Case for a  
WARPNINE-Specific Clinical  
Trial Coordinator

## Benefits and Impact

1. Navigating Uncharted Territory: The Coordinator leads groundbreaking trials tailored to these overlooked cancers.
2. Empowering Access: They ensure equitable access to innovative treatments, especially for underserved communities.
3. Data Integrity Guardians: Meticulous data management enhances research credibility, paving the way for breakthroughs.
4. Ethical Champions: Upholding ethical standards is non-negotiable to protect patients' rights and well-being.
5. Advocacy Amplifier: The Coordinator raises awareness, attracting more funding and support for this critical work.

With your support, WARPNINE is on the brink of a transformative initiative: establishing a dedicated Clinical Trial Coordinator position tailored to our mission. This role holds the power to profoundly impact under-researched cancers, like pancreatic, gastro-intestinal, and rare cancers, which often suffer from insufficient attention and resources. This opportunity holds the key to mitigating the stark disparities in outcomes for these cancers.

### The Challenge

Under-researched cancers perpetuate inequalities, leaving patients with limited options and dwindling hope. It is our duty to address this pressing challenge, and the Clinical Trial Coordinator is central to this effort.

### The Imperative:

Establishing a WARPNINE-specific Clinical Trial Coordinator is not just a strategic move; it's an imperative, signalling our deep commitment to eliminating disparities in research outcomes, and ensuring every patient receives the best care possible, regardless of the diagnosis.

### Join the Transformation:

We invite you to join us in this transformative journey, where hope is rekindled, and breakthroughs become the norm. Together, we will reshape the trajectory of under-researched cancers, striving for a future where every patient receives the care and attention they deserve.

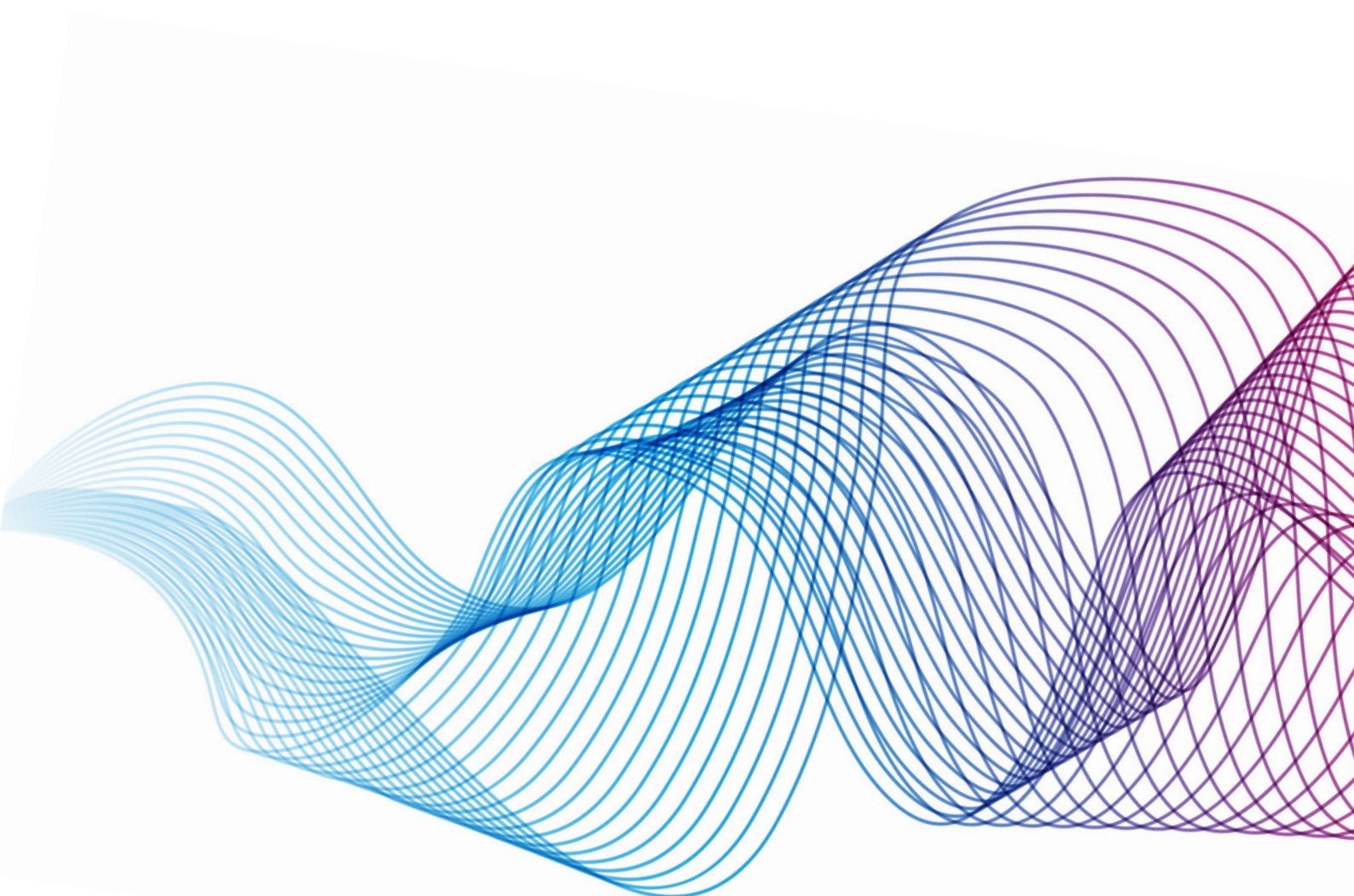
*Let's pioneer hope together.*

# The Opportunity for Transformation

Your financial support holds the power to ignite profound change.

With your partnership, we will:

- Champion revolutionary clinical trials with direct and immediate benefits for patients.
- Fuel research that swiftly delivers clinically significant advantages to those in need.
- Contribute to the exploration and implementation of groundbreaking, personalised treatments and therapies to combat cancer and reduce its recurrence.
- Strive for excellence in patient care, ensuring the holistic well-being of patients and their families.
- Nurture future leaders, drawing the best and brightest minds into the realm of pancreatic, gastro-intestinal, and rare cancer research.
- Raise awareness of pancreatic, gastro-intestinal, and rare cancers, advocating for equitable funding and research to address these disparities.
- Unearth cutting-edge technologies that revolutionise patient outcomes and enhance the quality of care.



# How you can help

In the realm of medical progress, time is both our greatest ally and our most formidable adversary. The urgency of support for our pancreatic, gastrointestinal, and rare cancer clinical trials and projects cannot be overstated. The impact of your support extends far beyond today; it ripples through time, offering hope and life to countless individuals for generations to come. By investing in these critical initiatives now, you are writing a legacy of compassion, innovation, and resilience. Together, we are bridging the gap between urgency and opportunity, ensuring that future generations inherit a world where these once-devastating cancers are conquerable.

**Join us in this vital journey to change the course of history and leave a profound mark on the future of healthcare.** Your support is the beacon of progress that lights the path toward a brighter, healthier tomorrow for all.

To discover how you can be involved and make a real difference, today, please contact:

**Meg Croucher**

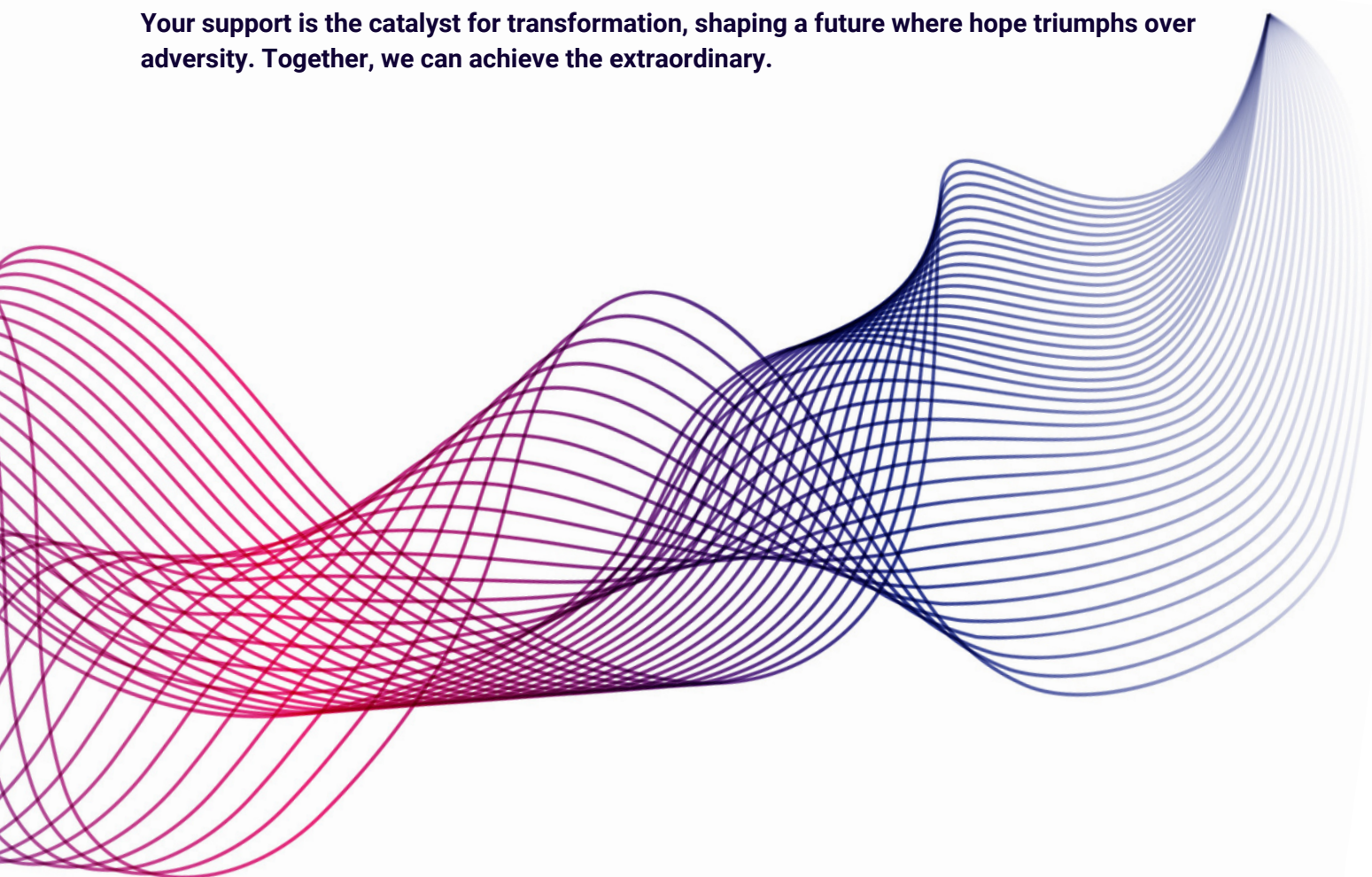
Chief Executive Officer

0406 818 810

[meg@warpnine.org.au](mailto:meg@warpnine.org.au)

[www.warpnine.org.au](http://www.warpnine.org.au)

**Your support is the catalyst for transformation, shaping a future where hope triumphs over adversity. Together, we can achieve the extraordinary.**





Charging at warp speed to find the cancer treatments of the future!

[www.warpnine.org.au](http://www.warpnine.org.au)

e: [admin@warpnine.org.au](mailto:admin@warpnine.org.au)

ABN: 25 683 900 655

Charitable Collections License: 23030